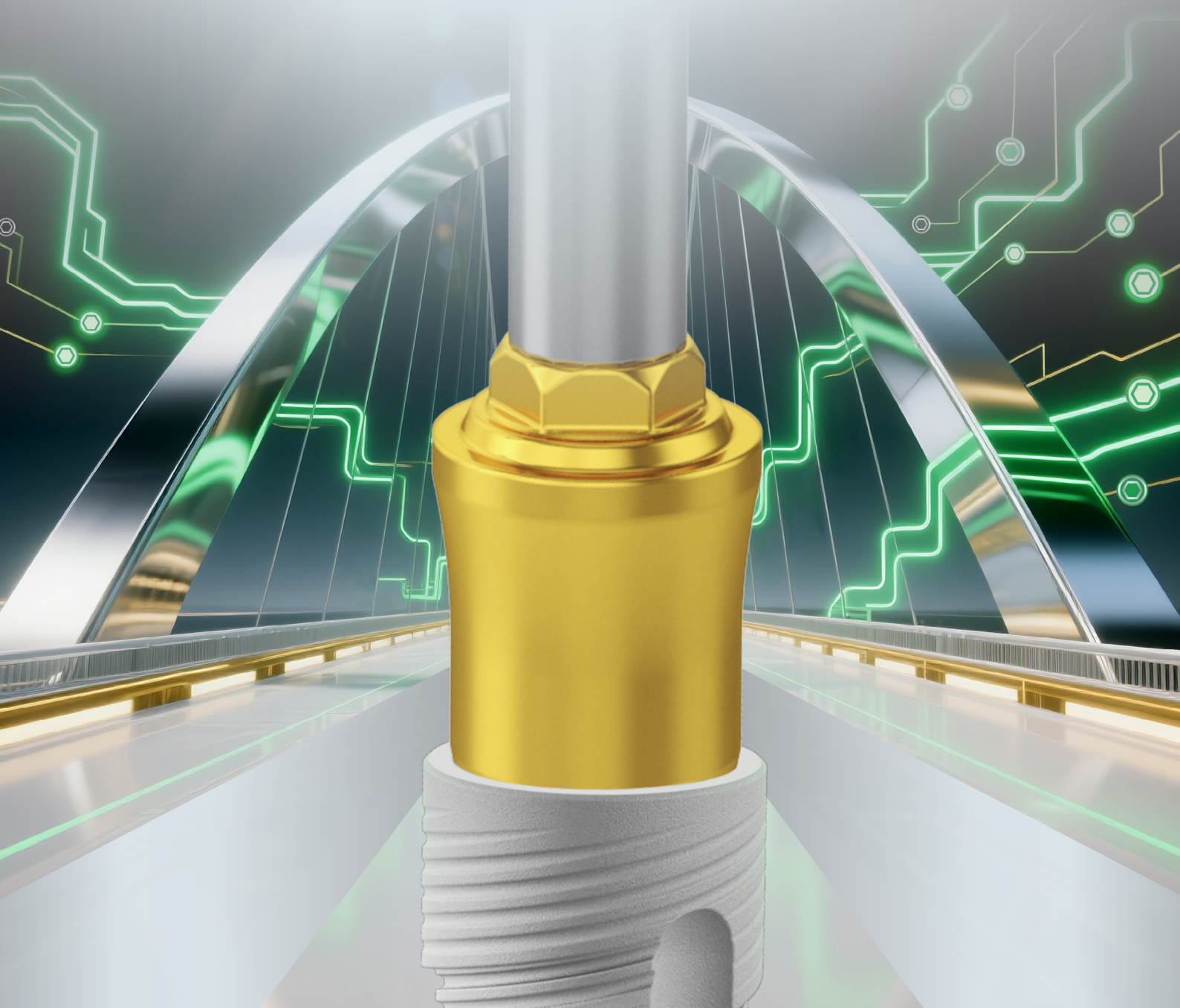


ALPHA™ ARCH

BRIDGING STABILITY, ESTHETICS & CONFIDENCE



THE NEXT LEVEL
IN PRECISION & RELIABILITY

 **AlphaBio**^{TEC}
Simplantology

ALPHA™ ARCH

BRIDGING STABILITY,
ESTHETICS & CONFIDENCE



Alpha™ Arch is a comprehensive solution for full and partial arch restorations—amplifying stability, esthetics & clinical confidence. It represents a clinical philosophy that integrates biomechanics, esthetic excellence, workflow efficiency, and long-term predictability.

Tailored to meet the highest standards of modern implant dentistry, Alpha Arch enhances esthetics, durability, ease of use, and soft tissue management. Engineered for precision and a secure fit, it empowers clinicians to achieve outstanding, predictable, long-term esthetic results and creates smiles with confidence!

CLINICAL BENEFITS



Prosthetic flexibility
& versatility



Predictable & improved
esthetics



Simplified & efficient
workflow



Improved tissue
stability

ELEVATING PERFORMANCE

INSPIRED BY HUMAN
POTENTIAL



CLINICAL INDICATIONS

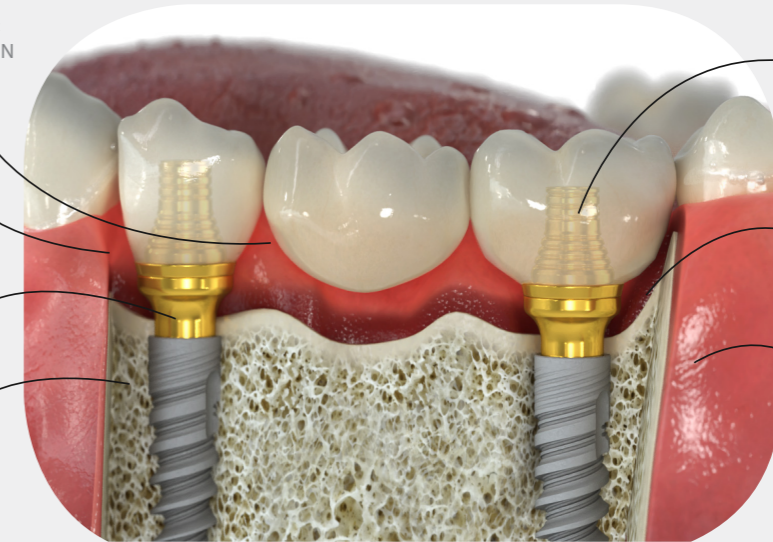
Full & partial implant-supported bridges

ENHANCED HANDLING & WORKFLOW INTEGRATION

OPTIMIZED SOFT TISSUE MANAGEMENT

BROAD RANGE OF GINGIVAL HEIGHTS OPTIONS FOR CUSTOMIZATION

SURGICAL FLEXIBILITY & BONE PRESERVATION



COMPATIBILITY WITH NOBEL BIO-CARE MULTI-UNIT PROSTHETICS (FOR THE 4.8MM SYSTEM COMPONENTS)

IMPROVED BIOMECHANICS & LONG-TERM STABILITY

PROSTHETIC PRECISION & ESTHETICS

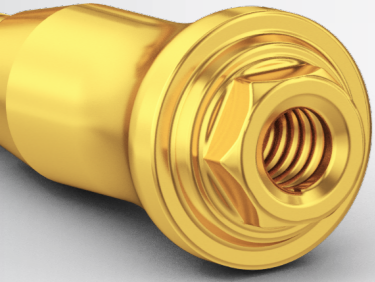
ALPHA ARCH DIVERGENCE ANGLE

Maximum divergence angle: 106°

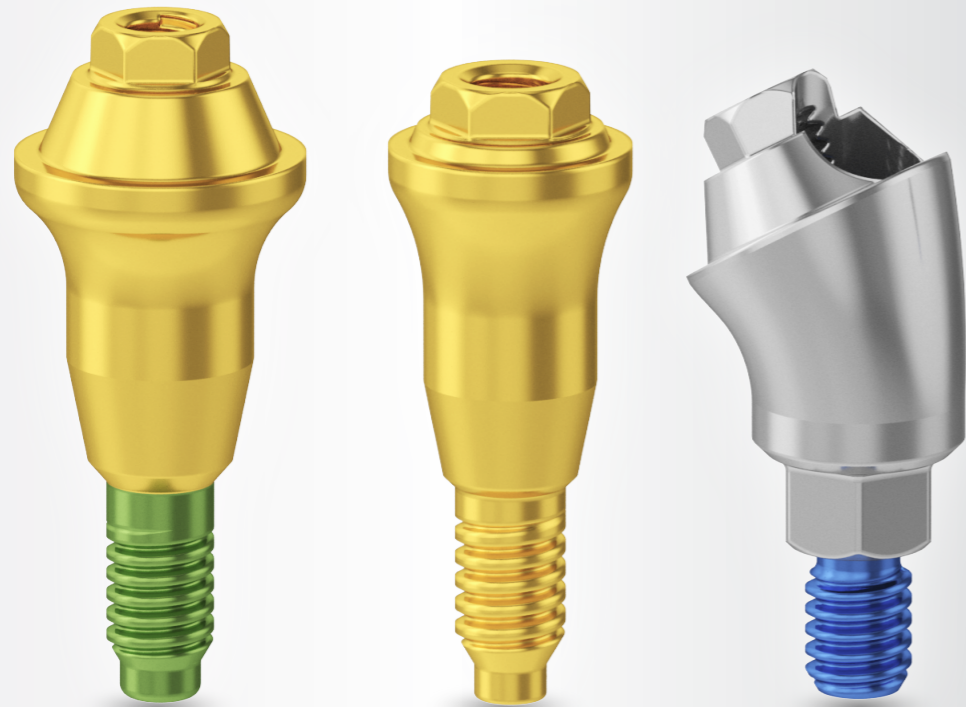
30°



30°



AVAILABLE IMPLANT-ABUTMENT CONNECTIONS



COLOR-CODED SCREWS FOR EASY IDENTIFICATION

CS - Anodized green screw CHC - Anodized gold screw IH - Anodized blue screw

- Standard Ø4.8 mm abutment compatible with commonly used Multi-Unit prosthetic components

AVAILABLE DIAMETERS

- Available heights: 1.5 mm, 2.5 mm, 3.5 mm
- Versatile treatment options

WIDE RANGE OF GINGIVAL HEIGHTS

- Available heights: 1.5 mm, 2.5 mm, 3.5 mm, 4.5 mm & 5.5 mm
- Versatile treatment options

- **NEW!** Narrow Ø3.5 mm abutment suitable for limited spaces and tight restorative areas

- Standard Ø4.8 mm abutment compatible with commonly used Multi-Unit prosthetic components



NARROW CONCAVE EMERGENCE PROFILE

- Enhanced soft tissue management and improved esthetics
- Enables subcrestal placement

PROSTHETIC COMPATIBILITY

- Same prosthetic components across all implant-abutment connections

GOLD ANODIZED BODY

- Improved esthetics and a more natural appearance

NEW HANDLE

- For Ease-of use

Ø 4.8 mm STANDARD STRAIGHT MULTI-UNIT ABUTMENTS

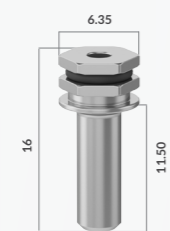
Ø 4.8 mm STANDARD ANGLED MULTI-UNIT ABUTMENTS

  Conical Standard Connection (CS)	 Ø 4.8 5701	 Ø 4.8 5702	 Ø 4.8 5703	 Ø 4.8 5704	 Ø 4.8 5705	 Ø 4.8 17° 5661	 Ø 4.8 17° 5662	 Ø 4.8 17° 5663	 Ø 4.8 30° 5761	 Ø 4.8 30° 5762	 Ø 4.8 30° 5763	
	  Conical Narrow Connection (CHC)	 Ø 4.8 5721	 Ø 4.8 5722	 Ø 4.8 5723	 Ø 4.8 5724	 Ø 4.8 5725	 Ø 4.8 17° 5681	 Ø 4.8 17° 5682	 Ø 4.8 17° 5683	 Ø 4.8 30° 5781	 Ø 4.8 30° 5782	 Ø 4.8 30° 5783
  Internal Hex Connection (IH)	 Ø 4.8 5711	 Ø 4.8 5712	 Ø 4.8 5713	 Ø 4.8 5714	 Ø 4.8 5715	 Ø 4.8 17° 5671	 Ø 4.8 17° 5672	 Ø 4.8 17° 5673	 Ø 4.8 30° 5771	 Ø 4.8 30° 5772	 Ø 4.8 30° 5773	

Multi-Unit Drivers & Prosthetic Screw

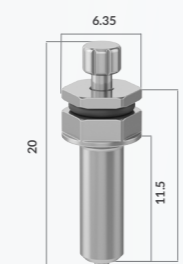
* Both Drivers & prosthetic screw are suitable for standard (Ø 4.8 mm) & narrow (Ø 3.5 mm) Multi-Unit Systems

STRAIGHT DRIVER



5600

RETRIEVER DRIVER



5700

PROSTHETIC SCREW



5610

TECHNICAL INFORMATION:

Material: Titanium | Drivers - Sandvik

Required Drivers:

- For the Straight Multi-Unit Abutments, use the Straight Driver (Ref.# 5600) & Retriever Drivers (Ref.# 5700)
- For the Angled Multi-Unit Abutments, please use the 1.25 mm prosthetics drivers

- All Ø 4.8 mm Multi-Unit Abutments are compatible with Nobel Biocare Multi-Unit Prosthetics

Recommended Tightening Torque:

- Straight Multi-Unit Abutments - 30 Ncm
- Angled CS & IH Multi-Unit Abutments - 30 Ncm
- Angled CHC Multi-Unit Abutments - 20 Ncm

∅ 4.8 mm MULTI-UNIT PROSTHETIC COMPONENTS

ALPHA ARCH

PUSHING THE LIMITS OF HUMAN CAPABILITIES

HEALING ABUTMENTS



TEMPORARY ABUTMENT



CASTING SLEEVE



OPEN TRAY TRANSFER



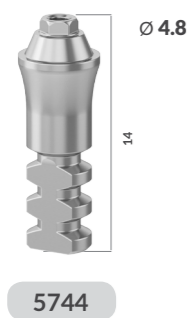
CLOSED TRAY TRANSFER



TRZ SCAN BODY



ANALOG



DIGITAL ANALOG



ADHESIVE COPING



TECHNICAL INFORMATION:

Material: Titanium | Drivers - Sandvik | TRZ Scan Body - PEEK

Recommended Tightening Torque:

- Straight Multi Unit Abutments - 30 Ncm
- Healing Caps, Open & Closed Tray Transfers & Scan Body - 10 Ncm or manual tightening
- Temporary Abutment - 20 Ncm

Required Drivers:

- Straight Driver (Ref. # 5600) and Retriever Driver (Ref.# 5700)



SCAN THE QR CODES FOR:
ALPHA ARCH INSTRUCTIONAL
GUIDE STEP BY STEP



∅ 3.5 mm NARROW STRAIGHT MULTI-UNIT ABUTMENTS

∅ 3.5 mm MULTI-UNIT PROSTHETIC COMPONENTS

30 Ncm

Conical Standard Connection (CS)

∅ 3.5 ∅ 3.5 ∅ 3.5 ∅ 3.5 ∅ 3.5

1.5 3.7 2.5 4.7 3.5 5.7 4.5 6.7 5.5 7.7

5601 5602 5603 5604 5605

HEALING ABUTMENTS

∅ 3.9 **MANUAL TIGHTENING 10 Ncm** ∅ 3.9

4 6

5641 5642

TEMPORARY ABUTMENT

∅ 3.5 **20 Ncm**

12

5648

CASTING SLEEVE

∅ 3.5

12

5649

30 Ncm

Conical Narrow Connection (CHC)

∅ 3.5 ∅ 3.5 ∅ 3.5 ∅ 3.5 ∅ 3.5

1.5 3.7 2.5 4.7 3.5 5.7 4.5 6.7 5.5 7.7

5621 5622 5623 5624 5625

OPEN TRAY TRANSFER

∅ 5.2

9

5643

CLOSED TRAY TRANSFER

∅ 3.5

8

5647

TRZ SCAN BODY

∅ 6

10

MU

MANUAL TIGHTENING 10 Ncm

5640

30 Ncm

Internal Hex Connection (IH)

∅ 3.5 ∅ 3.5 ∅ 3.5 ∅ 3.5 ∅ 3.5

1.5 3.7 2.5 4.7 3.5 5.7 4.5 6.7 5.5 7.7

5611 5612 5613 5614 5615

ANALOG

∅ 3.5

13

5644

DIGITAL ANALOG

∅ 3.5

13

5650

ADHESIVE COPING

∅ 3.9

7

5

20 Ncm

5646

Multi-Unit Drivers & Prosthetic Screw

* Both Drivers & prosthetic screw are suitable for standard (4.8mm) & narrow (3.5mm) Multi-Unit Systems

STRAIGHT DRIVER

6.35

16

11.50

5600

RETRIEVER DRIVER

6.35

20

11.5

16

5700

PROSTHETIC SCREW

∅ 1.9

4.5

5610

TECHNICAL INFORMATION:

- Material:** Titanium | **Drivers -** Sandvik | **TRZ Scan Body -** PEEK
- Recommended Tightening Torque:**
- Straight Multi Unit Abutments - 30 Ncm
 - Healing Caps, Open & Closed Tray Transfers & Scan Body - 10 Ncm or manual tightening
 - Temporary Abutment - 20 Ncm
- Required Drivers:**
- Straight Driver (Ref. # 5600) and Retriever Driver (Ref.# 5700)

ALPHA-ARCH WORKFLOW

Gingival Height	1.5 mm	2.5 mm	3.5 mm	4.5 mm	5.5 mm
	CS	5701	5702	5703	5704
CHC	5721	5722	5723	5724	5725
IH	5711	5712	5713	5714	5715

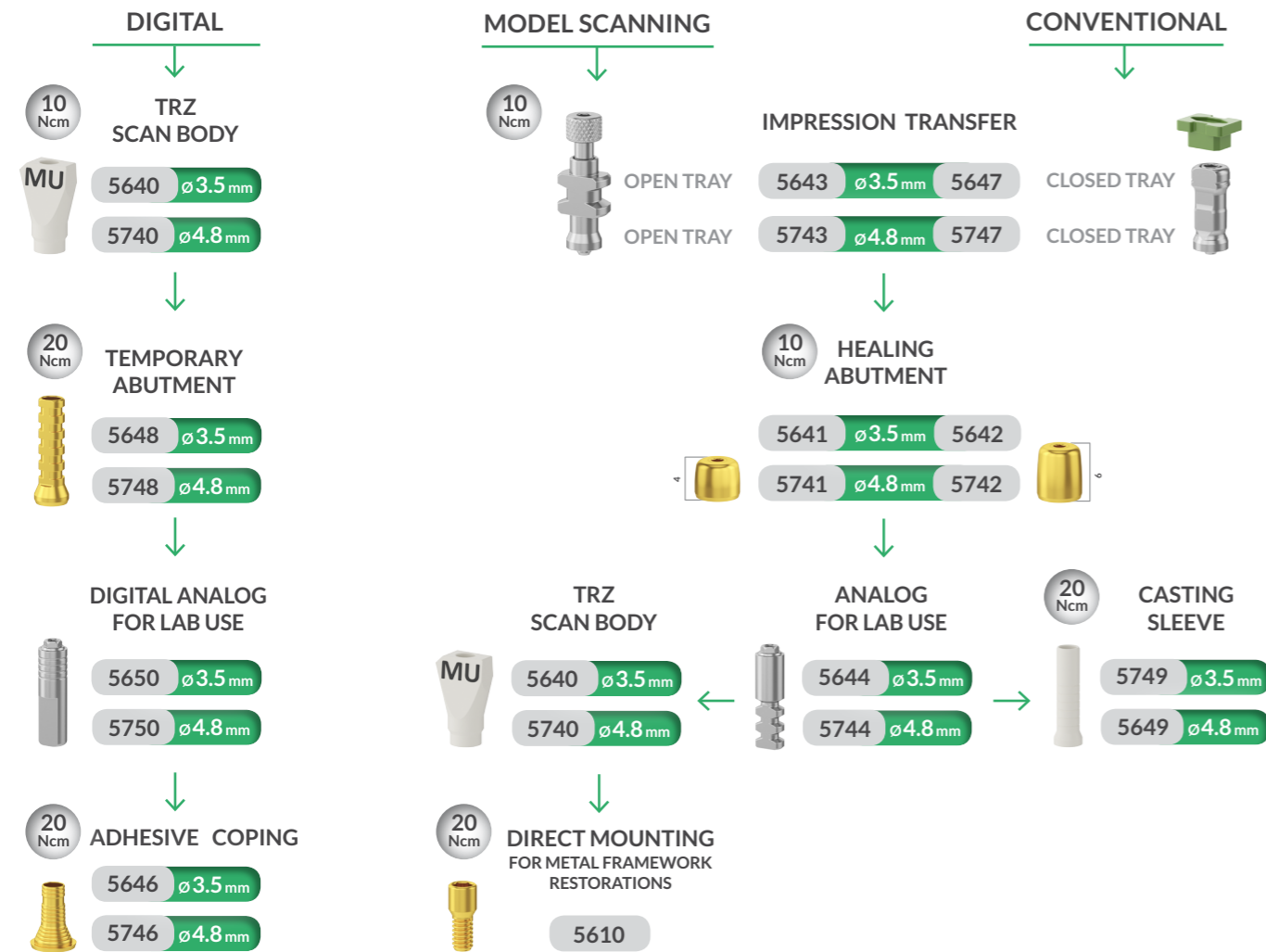
Gingival Height	1.5 mm	2.5 mm	3.5 mm	4.5 mm	5.5 mm
	CS	5601	5602	5603	5604
CHC	5621	5622	5623	5624	5625
IH	5611	5612	5613	5614	5615

Gingival Height	1.5 mm	2.5 mm	3.5 mm
	CS	5761	5762
CHC	5781	5782	5783
IH	5771	5772	5773

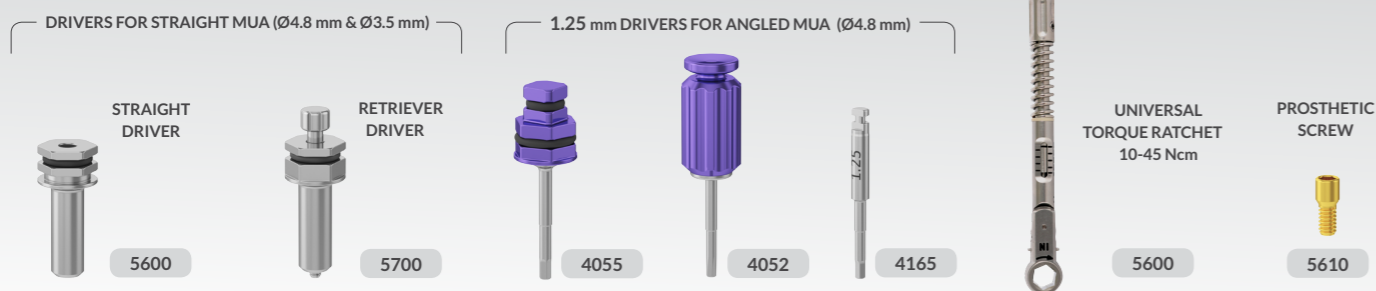
Gingival Height	1.5 mm	2.5 mm	3.5 mm
	CS	5661	5662
CHC	5681	5682	5683
IH	5671	5672	5673

ALPHA ARCH

SHAPING THE FUTURE
OF **RESTORATIVE EXCELLENCE**
ONE ARCH AT A TIME



DRIVERS & ACCESSORIES



ALPHA™ ARCH

BRIDGING STABILITY, ESTHETICS & CONFIDENCE



995-9563 R1.9.2025



SCAN THE QR CODES FOR:



ALPHA ARCH INSTRUCTIONAL
GUIDE STEP BY STEP



ALPHA ARCH FAQs



DIGITAL LIBRARIES
FOR CAD/CAM SYSTEMS



Alpha-Bio Tec's products are CE-marked in accordance with the EU Medical Device Regulation MDR 2017/745 of 5 April 2017. Alpha-Bio Tec's complies with EN ISO 13485:2016. Product availability may vary between countries. The Alpha Arch Solution components are intended for use by qualified dental professionals only. Use as directed on the e-IFU. Professional discretion is advised.

www.alpha-bio.net